

# BOOM, BOOM you are COUNTRY !!!

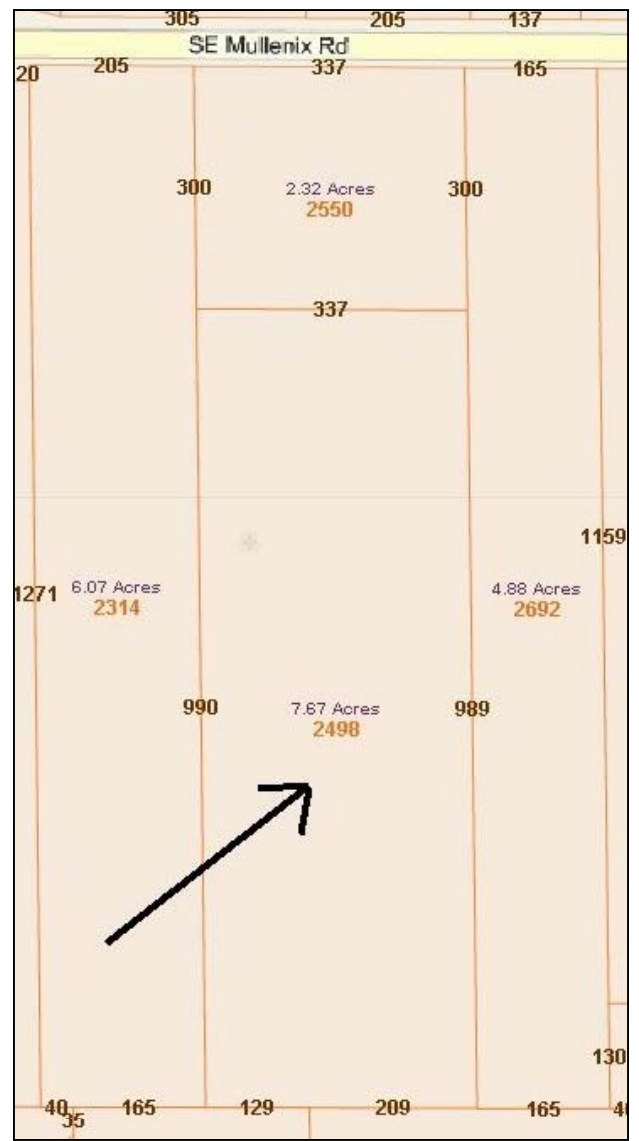
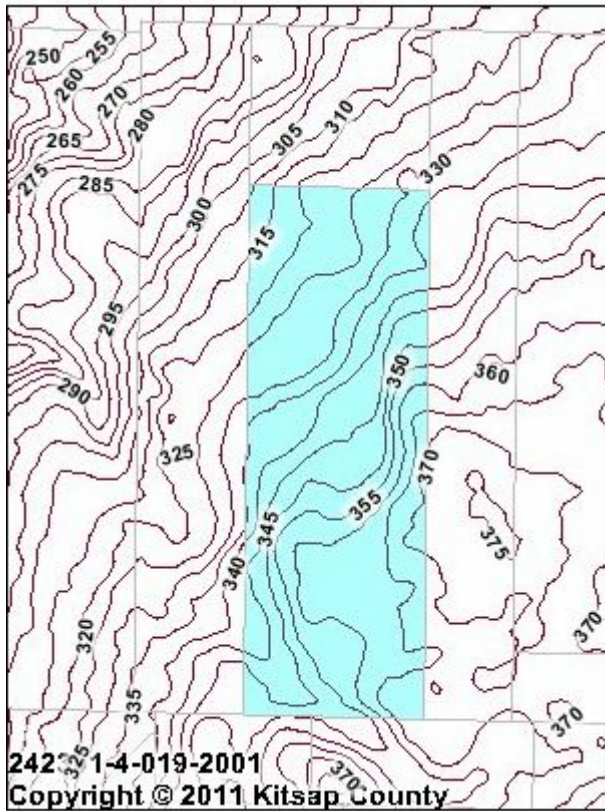
Turn off Hwy, two turns, 30 seconds and you will be home. Tucked away off Mullenix, 7 plus useable acres hidden by trees with lots of sunshine. What do u want to do here? Build a house, a family, a shop, a barn, courtyards, walking and riding trails? How much time will you save being this close to hwy 16? TONS. Don't be fooled by the address, the place to build is about 3 football fields south of Mullenix. Scouring for affordable acreage that is private, beautiful, usable, close in? Get out here before someone else rides off into the sunset with their own private preserve never to be seen again.

- ✓ Seconds from hwy 16.
- ✓ Obscured, Hidden, Secluded from Mullenix and neighbors.
- ✓ 7 plus acres. Much of which is cleared and sunny.
- ✓ Private access through easement to land. 300' feet off of Mullenix.
- ✓ Land extends 990 feet south of border and about 1290 feet south of Mullenix.
- ✓ Best location to build is higher, southern end of property.
- ✓ Existing road to south end of property.
- ✓ Public water supply on Mullenix.
- ✓ Room for horses, quads, sheds, barns, workshops, gardens, llamas, alpacas, goats ... ???

2498 Mullenix



MLS: 370449



Send me a text msg

Go to web site for this property  
[www.inkitsap.com/mullenix](http://www.inkitsap.com/mullenix)



Send me an email



Danny Horovitz [danny@inkitsap.com](mailto:danny@inkitsap.com)  
(360) 710-5070 cell  
John L. Scott Real Estate, 2244 NW Bucklin Hill, Silverdale, WA 98383