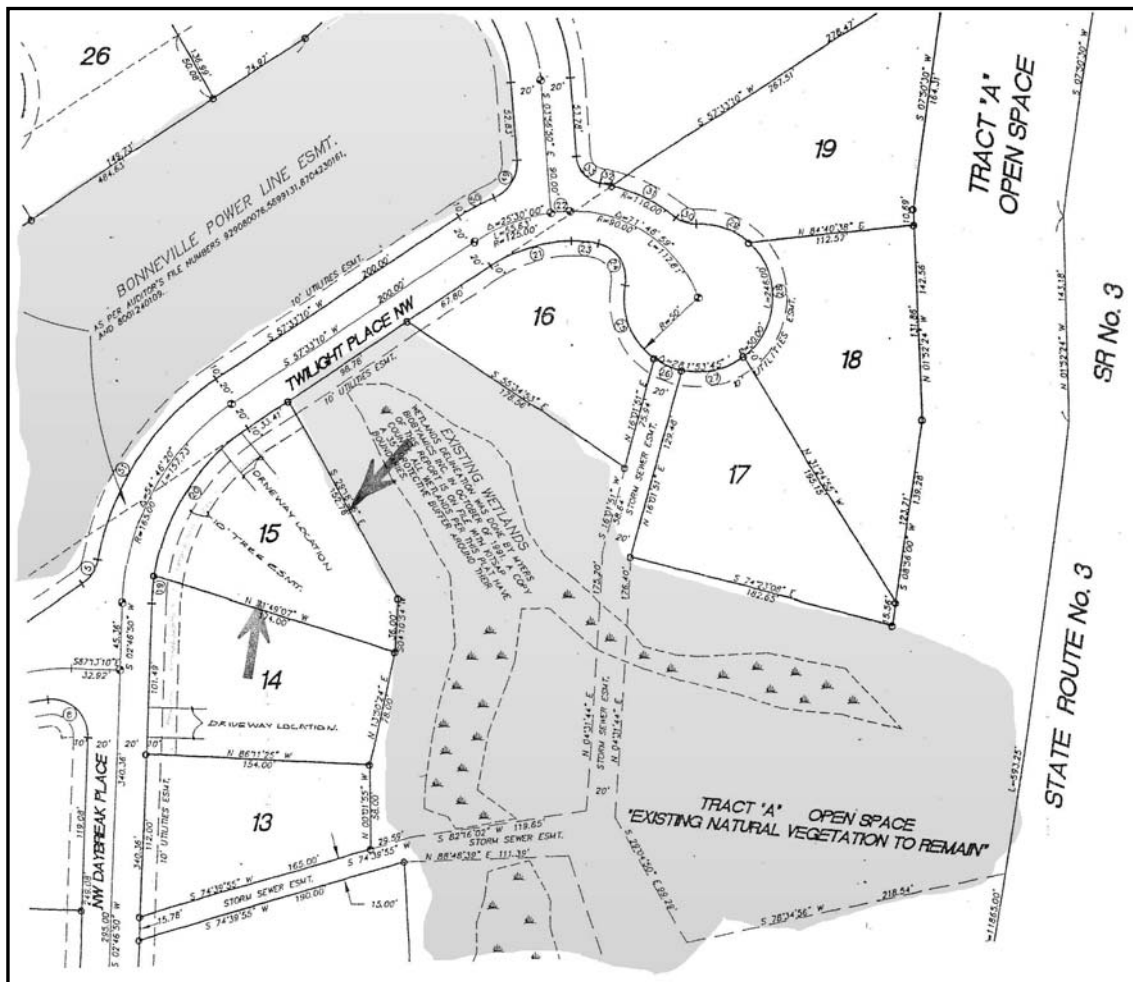


13800 TWILIGHT PLACE NW, SILVERDALE, WA



GREAT PRIVACY - ONLY ONE NEIGHBOR

Wetlands to east and utility easement land across the street are unlikely to ever be built on. (All information is not guaranteed and must be verified by buyer).



Great privacy- only one neighbor but in a great neighborhood! Southern and eastern exposures mean lots of sunshine. Big open south horizon from the back of the house. Big yard.

Pleasing tri-level layout-- kitchen, living room, dining room on the main floor. Bedrooms upstairs. Family room, half bath, laundry on the lower level.

Newer home, built in 1997. Natural gas heat. Close to Bangor, Silverdale and the Shipyard. MLS: # 365038. 1923 SF, 3 beds/2.5 baths, .35 Acre.

By way of comparison, the house up the street is pending 13727 Daybreak Place, at \$305,900 list price, 0.39 Acre, 2452 SF.

Pictures at www.inkitsap.com/twilight
Or scan with your phone:



For your private showing contact:
Danny Horovitz
John L. Scott Real Estate
2244 Bucklin Hill NW
Silverdale, WA 98383
(360) 710-5070
danny@inkitsap.com

To see other homes that interest you give me a call or send me an email.

To see my reviews on Zillow, aim your browser at:
<http://www.zillow.com/profile/DanielHorovitz/Reviews/>
Or scan with your phone:

